

180

Sensor Tap

The 180 Series wall mounted sensor tap is extremely functional and robust and suits any washroom due to the minimalist design and choice of spout size.



Codes	Power supply	Length	Weight
181	Battery	170mm (6 $\frac{11}{16}$ ")	1.16Kg (2lb 9oz)
182	Mains	170mm (6 $\frac{11}{16}$ ")	1.16Kg (2lb 9oz)
183	Battery	220mm (8 $\frac{21}{32}$ ")	1.27Kg (2lb 13oz)
184	Mains	220mm (8 $\frac{21}{32}$ ")	1.27Kg (2lb 13oz)

Technical Data

Finishes	C (Chrome) / CS (Satin)
Min/Max operations pressure	0.5 - 8 bar dynamic pressure (7.2 - 116 psi)
Flow rate	4 litres per minute (1 GPM (US)) standard. Options for 1.89 and 6 litres per minutes (0.5 and 1.59 GPM (US)) available
Aerator	Cascade
Warranty	2 years from date of purchase.
Sensor range (adjustable)	Preset 120mm (4 $\frac{23}{32}$ "). Min range 50mm (2") - Max range 200mm (7 $\frac{7}{8}$ ")
Security cut-off	90 seconds
Hot water temperature	Max 70°C (158°F)
Power supply	Mains - IP67 rated transformer with push-fit cabling to tap Battery - IP67 rated battery holder with push-fit cabling to tap (6 x AA batteries)

Optional Accessories

06001012	Power splitter 2 Way - 1M-2F -1.5 metre (59")
06001008	Power splitter 3 Way - 1M-3F - 1.5 metre (59")
06009016	Extension cable 1 metre (39 $\frac{1}{2}$ ")
06009032	Extension cable 4 metre (157 $\frac{1}{2}$ ")
09510073	700mm Flexi hose - $\frac{1}{2}$ " BSP thread
0710005	Remote control for sensor tap
08510012	Aerator - 1.89 litres per minute (0.5 GPM (US))
08510034	Aerator - 6 litres per minute (1.59 GPM (US))

Installation Requirements

Wall cutout	23mm ($\frac{29}{32}$ ") – 27mm (1 $\frac{1}{16}$ ") plus 3.5mm ($\frac{9}{64}$ ") anti-rotation pin locating hole
Maximum wall thickness	33mm (1 $\frac{19}{64}$ ")
Electrical supply	3amp fused spur to be connected to IP68 transformer supplied; low voltage push fit connector to tap. For more reliable operation, it is not recommended that sensor taps are connected to an occupancy circuit. All connections must be in accord with the current local regulations in force.
Water supply	ONVO sensor taps require at least 0.5bar dynamic water pressure to operate effectively; if 1 bar or more can be achieved the operation of the tap will be better. Applications with gravity-fed plumbing systems may require a booster pump to achieve the optimum operating pressure. The taps can be pressure tested to 10bar for commissioning purposes. All pipework must be thoroughly cleaned before connecting the tap to clear the pipes of any debris.
Access requirements	Solenoid and isolation valves must be accessible at for initial installation & commissioning and for ongoing and routine maintenance.
Washroom layout and planning	To prevent sensor malfunction, avoid installing sensor tap directly opposite other sensor taps/soap dispenser, other infra-red devices or reflective surfaces. The choice of other accessories in the room must also be considered, such as the waste outlet which can affect the sensor with light reflection. Care and consideration should also be given to the positioning of the lighting in the room, particularly in the case of taps with downward facing sensors.

Compliance

WRAS

BREEAM - 1 credit

LEED - 4 points

RoHS

CE

cUL

Related Products

Soap dispenser

[480](#)

Related Documents

Installation and maintenance manual

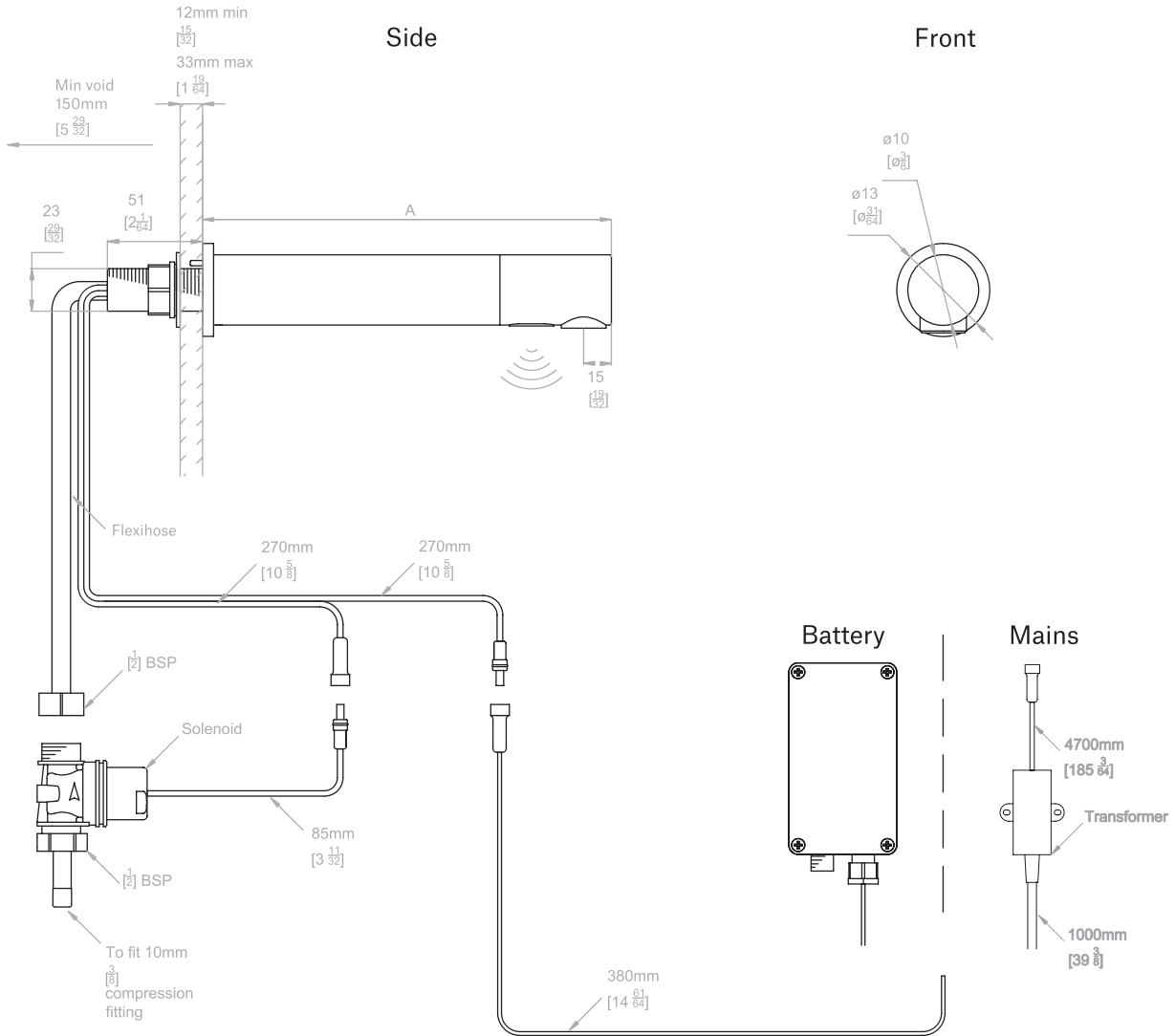
email: sales@onvouk.com

Warranty document

email: sales@onvouk.com

180 Sensor Tap

Technical Drawing



	A	Flexi hose free length
181	170mm [6 ¹¹ / ₁₆]	330mm
182	170mm [6 ¹¹ / ₁₆]	330mm
183	220mm [8 ²¹ / ₃₂]	280mm
184	220mm [8 ²¹ / ₃₂]	280mm

