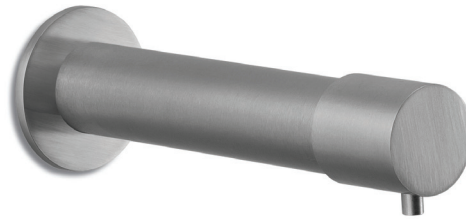


480

Soap Dispenser

The 480 is a pump action wall mounted soap dispenser available in two lengths, and uses a quick replenishment soap system.



Codes	Length	Weight
480	120mm (4 ²³ / ₃₂ ")	0.5Kg (1lb 1oz)
484	160mm (6 ¹⁹ / ₄₆ ")	0.58Kg (1lb 14oz)

Technical Data

Finishes	C (Chrome) / CS (Satin)
Warranty	12 months from date of purchase
Recommended soap viscosity	100 to 3800 cPs For liquid soap only. Not for use with foam soap, alcohol gel or hand sanitizer.
Body	AISI 316 stainless steel for CS version. Chrome plated brass for C version.
Tested to:	2,000,000 depressions
Recommended soap system (not included)	ST series To be specified separately
Standard discharge	1cc

Spare Parts

There are no user serviceable parts.

Installation Requirements

Wall cut-out (dia)	18mm (⁴⁵ / ₆₄ ")
Maximum wall thickness	50mm (2")
Reservoir location	Soap reservoir must be mounted below the dispenser. The dispenser is not designed to draw soap from a reservoir mounted above.

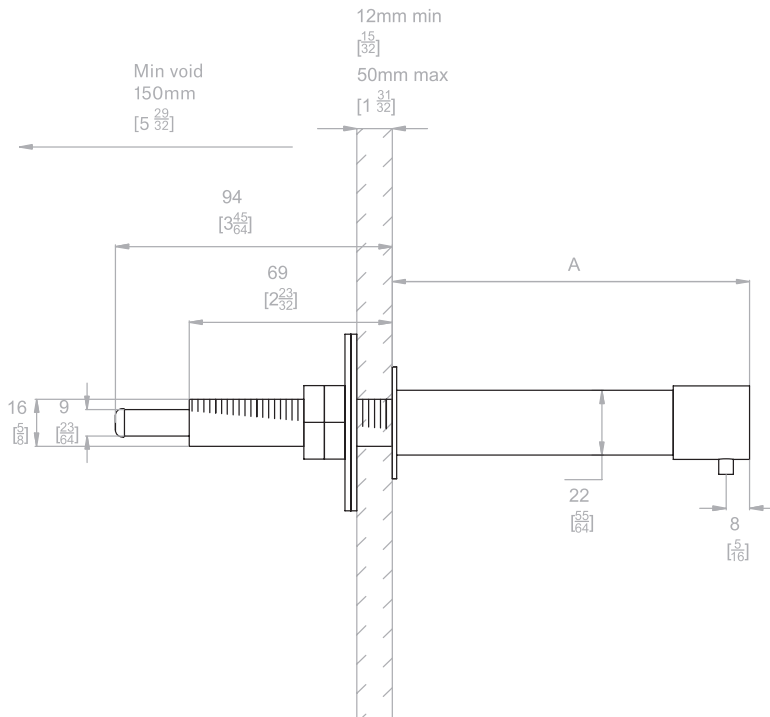
Related Products

Sensor tap [180](#)
 Soap feed [Soap feed systems](#)

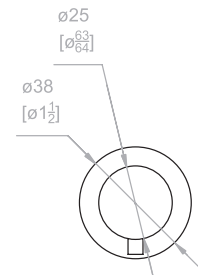
Related Documents

Installation manual email: sales@onvouk.com
 Operation and maintenance manual email: sales@onvouk.com
 Warranty document email: sales@onvouk.com
 Installation video Coming soon

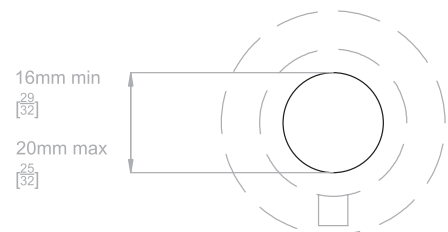
Side



Front



Cutout



	A
480	120mm [4 ²³ / ₃₂]
484	160mm [6 ¹⁹ / ₆₄]